

# SECTOR SPOTLIGHT

## MED BIOTECH

At Norwich Research Park there is a multidisciplinary approach whereby clinical researchers, scientists and entrepreneurs work collaboratively to drive innovation and deliver new products in to the market place.

Research carried out on actinomycetes at the John Innes Centre is revealing new insights into how these organisms make antibiotics.



## RESEARCH FOCUS

### GASTROENTEROLOGY

Research focus is on intestinal inflammation and the interaction of the gut microbiome. Specific areas include microbial host interactions in the gut and the use of commensal bacteria as therapeutic agents.

### MEDICAL MICROBIOLOGY

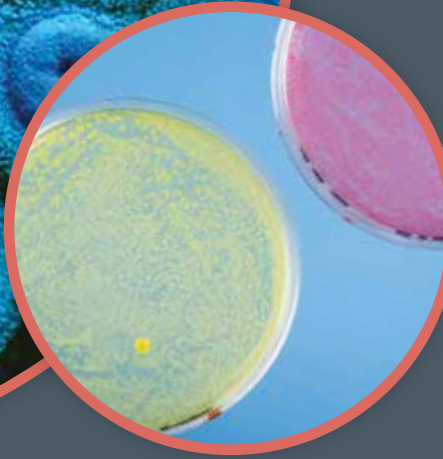
Areas of interest include gastrointestinal microbiology in relation to food, water and health and the development and evaluation of molecular methods for profiling infectious diseases.

### ANTI-MICROBIAL RESISTANCE

A multidisciplinary approach to antimicrobial research is taken which includes microbiology, diagnostics, synthetic and natural product chemistry, enzymology and structural biology.

### BIOFILMS

The increased use of prosthetics and implants has resulted in an increase in the pathology caused by biofilms (the adhesion of microorganisms to a surface). The Norwich Biofilms Group work to develop rapid diagnosis and eradication of biofilms.



Laboratory strains of *E.coli* used for the efficient assembly of separate DNA molecules required to make chromoproteins.

Image credits: Tobias Kieser (main image), Mark Youles, Nicola Patron and Andrew Davis

# SECTOR SPOTLIGHT

## MED BIOTECH



### KEY RESEARCH ORGANISATIONS

- **Norfolk and Norwich University Hospital:** 1,000 bed teaching hospital combining high-quality clinical and laboratory services with active research programmes.
- **The Earlham Institute:** one of the UK's leading institutes, applying genomics and computational approaches to advance bioscience.
- **University of East Anglia:** UK top 15 university, world top 200 with major faculties in Science and Medicine.

### KEY BUSINESS ORGANISATIONS

- **Health Economics Consulting:** providers of comprehensive Health Technology Assessments for sponsors of new products.
- **Inspiralis:** Suppliers of research services and products to the pharmaceutical industry including topoisomerases and other DNA / RNA modifying enzymes.
- **Iceni Diagnostics:** developers of bespoke sugars for use in rapid diagnostic tests, alternatives to antibiotics, biopharmaceuticals and vaccines.
- **Anglia Capital Group:** a network of investors and private venture funds, investing in hi-tech businesses and technology start-ups.

### SERVICES AND FACILITIES

- **Biorepository:** a dedicated, well-equipped human tissue facility providing services to academic and business communities.
- **Clinical Trials Unit:** an effective platform for the conduct of high quality clinical trials, it also provides a forum for training and methodological advancement in trial design, conduct and analysis.
- **Science Facilities:** Imaging Laboratory, Analysis Suite and Disease Modelling Unit.

### BUSINESS SUPPORT

- Free business coaching and mentoring.
- Angel network and grant signposting.
- Networking and events.

### PARK OCCUPIER BENEFITS

- Enterprise Zone business rate discounts.
- Purchasing scheme.
- One Nucleus membership benefits.
- Café and meeting rooms.
- Superfast broadband.
- Free on-site parking and Wi-Fi for visitors.

### SPACE

- **Accelerator lab:** Shared bench space plus access to shared equipment lab.
- **Accelerator office:** Shared office space.
- **Bioincubator:** Small laboratory and office units plus access to shared equipment lab.
- **Centrum:** Networking café, medium to large laboratory and office units.
- **Design and build:** Serviced plots ready for development.



Loading SMRT cell chip strip onto the PacBio RSII sequencing platform.

Image credits: Steve Wright

#### For more details please contact:

Norwich Research Park Management Office  
t 01603 673 600 e enquiries@norwichresearchpark.com

[www.norwichresearchpark.com](http://www.norwichresearchpark.com)

